

Anti-Mouse IgG (gamma 1, 2a, 2b and 3 chain) (ATTO 532 Conjugated) Secondary Antibody
Rabbit Polyclonal, ATTO 532
Catalog # ASR1160

Specification

Anti-Mouse IgG (gamma 1, 2a, 2b and 3 chain) (ATTO 532 Conjugated) Secondary Antibody - Product Information

Description	Anti-MOUSE IgG (gamma 1, 2a, 2b and 3 chain) (RABBIT) Antibody ATTO 532 Conjugated
Host	Rabbit
Conjugate	ATTO 532
FP Value	2.0 moles ATTO 532 per mole of IgG
Target Species	Mouse
Clonality	Polyclonal
Application	WB, IF
Application Note	FLISA >1:20,000;IF Microscopy >1:5,000;Western Blot >1:10,000
Physical State	Lyophilized
Host Isotype	IgG
Target Isotype	IgG (gamma 1, 2a, 2b and 3 chain)
Buffer	0.02 M Potassium Phosphate, 0.15 M Sodium Chloride, pH 7.2
Immunogen	highly purified mouse IgG gamma 1, gamma 2a, gamma 2b and gamma 3 proteins
Reconstitution Volume	100 µL
Reconstitution Buffer	Restore with deionized water (or equivalent)
Stabilizer	10 mg/mL Bovine Serum Albumin (BSA) - Immunoglobulin and Protease free
Preservative	0.01% (w/v) Sodium Azide

Anti-Mouse IgG (gamma 1, 2a, 2b and 3 chain) (ATTO 532 Conjugated) Secondary Antibody - Additional Information

Shipping Condition

Ambient

Purity

Mouse IgG (gamma 1, 2a, 2b and 3 chain) Antibody ATTO 532 was prepared from monospecific antiserum by immunoaffinity chromatography using antigens coupled to agarose beads followed by solid phase adsorption(s) to remove any unwanted reactivities. This product shows balanced reactivity to Mouse IgG1, IgG2a, IgG2b and IgG3 proteins and is suitable to screen IgG class hybridoma clones. Minimal cross reactivity is observed against other Mouse immunoglobulin classes or light chain proteins.

Storage Condition

Store vial at 4° C prior to restoration. For extended storage aliquot contents and freeze at -20° C

or below. Avoid cycles of freezing and thawing. Centrifuge product if not completely clear after standing at room temperature. This product is stable for several weeks at 4° C as an undiluted liquid. Dilute only prior to immediate use.

Precautions Note

This product is for research use only and is not intended for therapeutic or diagnostic applications.

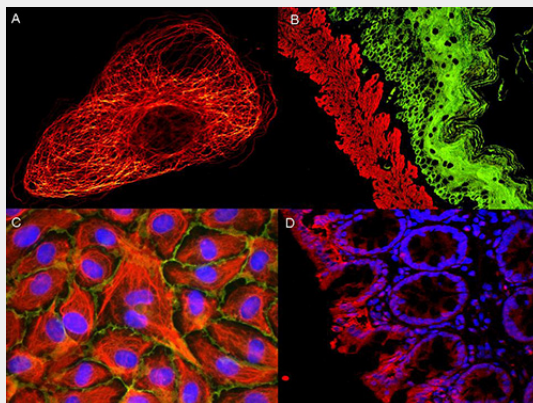
Anti-Mouse IgG (gamma 1, 2a, 2b and 3 chain) (ATTO 532 Conjugated) Secondary Antibody - Protein Information

Anti-Mouse IgG (gamma 1, 2a, 2b and 3 chain) (ATTO 532 Conjugated) Secondary Antibody - Protocols

Provided below are standard protocols that you may find useful for product applications.

- [Western Blot](#)
- [Blocking Peptides](#)
- [Dot Blot](#)
- [Immunohistochemistry](#)
- [Immunofluorescence](#)
- [Immunoprecipitation](#)
- [Flow Cytometry](#)
- [Cell Culture](#)

Anti-Mouse IgG (gamma 1, 2a, 2b and 3 chain) (ATTO 532 Conjugated) Secondary Antibody - Images



ATTO ® dyes can be used for multicolor immunofluorescent detection with low background and high signal. Examples shown are: A. Tubulin in PtK2- male Rat Kangaroo Kidney Epithelial Cells was detected using ATTO 532 labeled secondary antibody. B. Muscle alpha-actin was stained with a mouse primary antibody and ATTO 488 anti-mouse IgG (green) while Cytokeratin was stained with polyclonal rabbit anti-cytokeratin and ATTO 647N anti-rabbit IgG (red). C. HUVEC (Human umbilical vein endothelial cells) were stained with anti- Vimentin-ATTO 532 (green), anti-E-Cadherin-ATTO 655 (red) and DAPI (blue). D. Rat colon sections were stained with Anti-Aquaporin 3-ATTO 594 antibody. Hoechst 33342 (blue) is used as counterstain. Images provided courtesy of Dr. Jörg Reichwein, ATTO-TEC GmbH

Anti-Mouse IgG (gamma 1, 2a, 2b and 3 chain) (ATTO 532 Conjugated) Secondary Antibody - Background

Anti-Mouse IgG (gamma 1, 2a, 2b and 3 chain) conjugated to ATTO 532 is designed for STED microscopy, FRET, immunofluorescence microscopy, fluorescence based plate assays (FLISA) and fluorescent western blotting. This product is also suitable for multiplex analysis, including multicolor imaging, utilizing various commercial platforms.